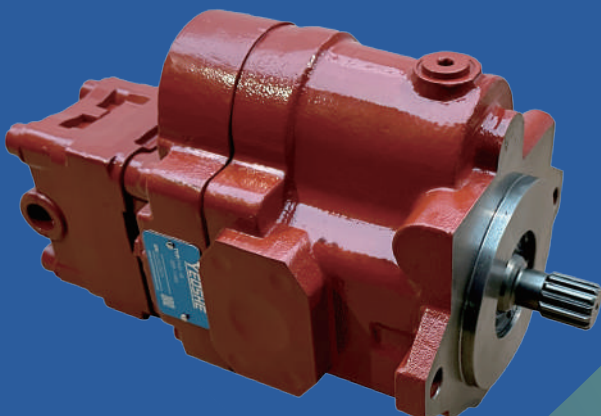
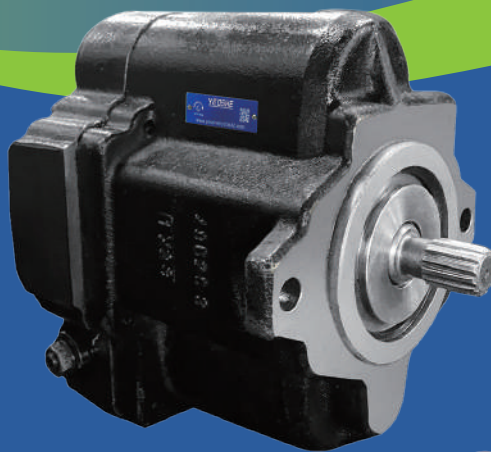




YEOSHE

High Efficiency Transmission

**New Energy-Saving and
Carbon-Reducing Technology**



YEOSHE HYDRAULICS TECHNOLOGY CO.,LTD.



Upholding professionalism

Quality first • Efficiency prioritized

Service above all • Sustainable operation

Founded in 1989, **YEOSHE** is a professional hydraulic manufacturer in Taiwan, known for high-quality hydraulic pumps and machines. With over 30 years of experience, **YEOSHE** has built a reliable reputation in both domestic and international markets, offering piston pumps, gear & vane pumps, hydraulic machines, power units, hydraulic valves, and related components.

Continues to serve global partners with innovative technology, efficient performance, reliable quality, and trustworthy service. We invite you to become our loyal partners and promise to exceed your expectations.

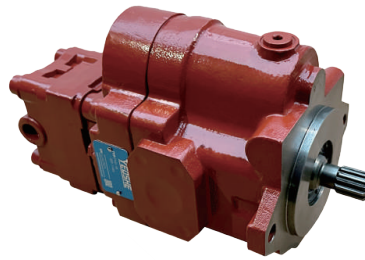
YEOSHE maintains strict quality control and uses advanced machinery to stay competitive. Our processes are ISO certified, ensuring we meet market trends and customer needs.



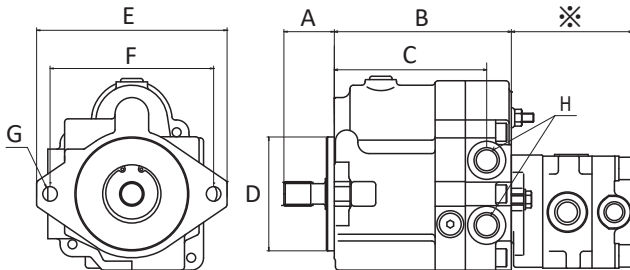


PVD Plunger Pump

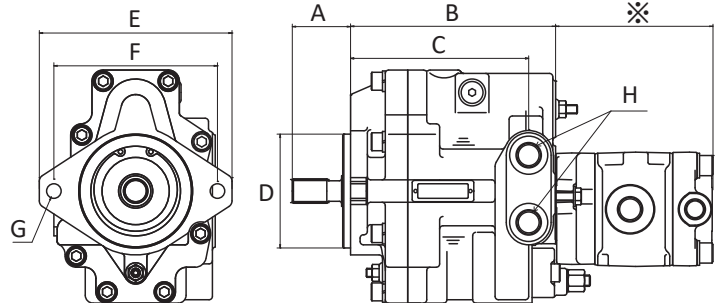
The control length of the compact dual-flow plunger pump can be mounted in limited spaces. In addition, the unique swashplate tilting support structure ensures rated power control, thus effectively utilizing the engine's output.



See more details



PVD-00B , 0B , 1B



PVD-2B , 3B

Series Outline Dimension Table

Symbol	A	B	C	D	E	F	G	H
PVD-00B	46	128.5	110	Ø101.6	170	146	2-Ø13	2-G3/8
PVD-0B	45	149	135	Ø101.6	170	146	2-Ø13	2-G3/8
PVD-1B	45	158	136	Ø101.6	170	146	2-Ø13	2-G1/2
PVD-2B	52	183	159	Ø101.6	172	146	2-Ø13	2-G1/2
PVD-3B	59	251	208	Ø127	164	128	4-Ø16	2-G3/4

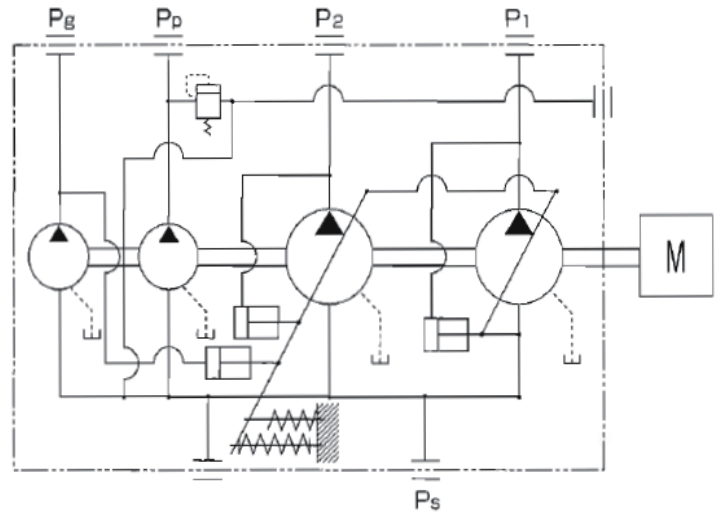
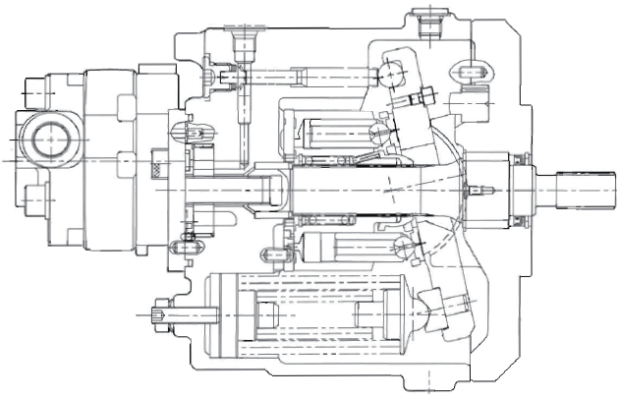
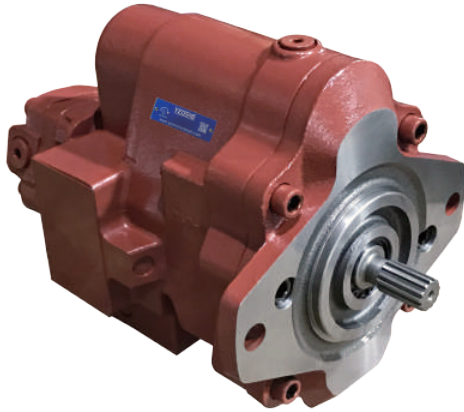
Optional Accessories (Symbols)

1. With 1 or 2 gear pumps (G) (P3 pump pressure: 20.6MPa, pilot P4 pump pressure: 3.9MPa)
2. With Override Control Mode (P)
3. With Valve Plate (B) (with 2 solenoid valves, overflow valve for P4 pump)

Model	Displacement (cm ³ /rev)	Max.pressure (MPa)	Max.speed (min ⁻¹)	Optional function	(Note 1) (ton)
PVD-00B	8x2	24.5	2800	G,P	~1.5
PVD-0B	12x2	24.5	2800	G,P,B	~2.5
PVD-1B	17x2	24.5	2700	G,P,B	~3.5
PVD-2B	25x2	24.5	2600	G,P,B	~5.5
PVD-3B	39x2	32.0	2200	G,P,B	~8.0



Mini Excavator 2~6t - E-PSVD2 Series



- **General**

E-PSVD2 series pumps are developed most suitably for 2~5ton mini excavators.

This E-PSVD2 pump consist of 4 elements :

- 2 piston pumps,
- 1 gear pump,
- 1 trochoid pump.

In this series, 4 different size pumps are available.

- **Features**

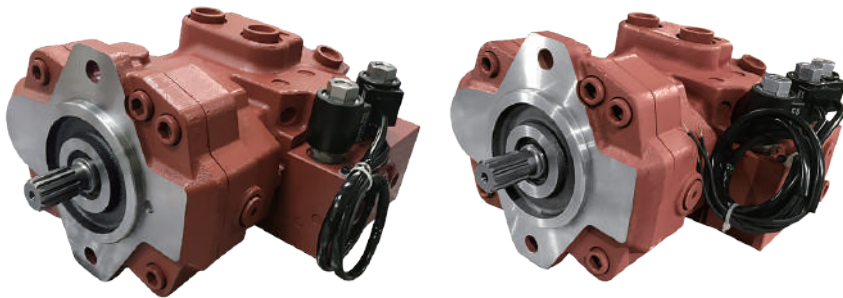
1. Light weight, simple structure and reduced number of parts.
2. Low noise and low pressure ripple by excellent , Swash Plate and Valve Plate design.
3. Short total length ensure the pump fit small engine room.
4. One common suction port is divided into 4 pump suction area in the case.
5. No case drain port
6. Long life
7. Others
 - 1) Pilot pump and relief valve (30-50 bar) are installed as standard.
 - 2) Selection of gear pump displacement is option.



Hydraulic Piston Pump

YEOSHE

E-PSVD2 Series



See more details



YANMAR VIO50 / LIUGONG LG906C
HITACHI ZX40 / ISHIKAWAJIMA IHI60

Available control option:
- with two solenoid valve
- with three solenoid valve

Gear Pump Spec.
Displacement (cm³ /rev) : 7.0 / 12 / 17
Max.Pressure (MPa) : 20.6

17E

Technical Data

	Model	Displacement (MI/r)	Rated pressure (bar)	Maximum torque (N.m)	Splined Shaft(T)	Weight (Kg)	Excavator (Ton)
○	E-PSVD2-17E -17-0000	17x2	250	85.3	13	23	2.5~3.5
●	E-PSVD2-17E -17-0055						
○	E-PSVD2-17E -12-0056						
●	E-PSVD2-17E -17-0056						

21E

Technical Data

○	E-PSVD2-21E -17-0000	21x2	250	122.6	13	26	3.5~4.5
●	E-PSVD2-21E -17-0056						

27E

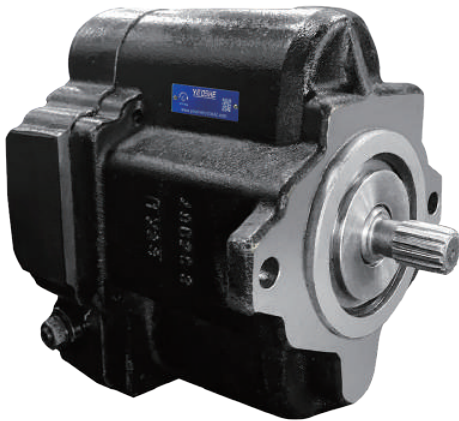
Technical Data

○	E-PSVD2-27E -17-0000	27x2	250	140.2	13	36	4.5~6.0
●	E-PSVD2-27E -12-0055						
●	E-PSVD2-27E -17-0057						

○ Mechanical Type ● Electronic Control Type

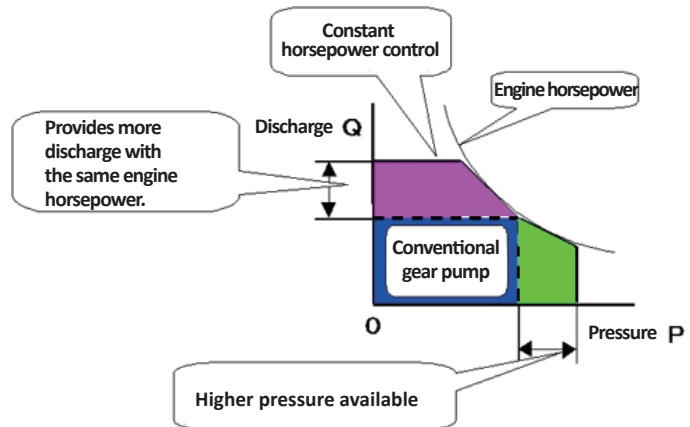


For mini excavators 2~6t - E-PVK-2B-505-N

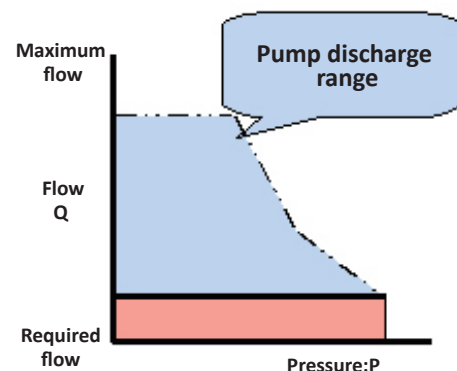
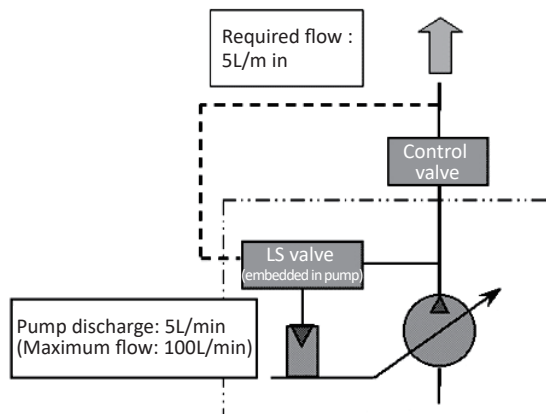


Through load sensing control to reduce energy consumption

Operational Theory



Discharges only the necessary flow



- **Features**

Constant horsepower control with full using of engine horsepower, resulting in increased speed and power of machine.

- **Specifications**

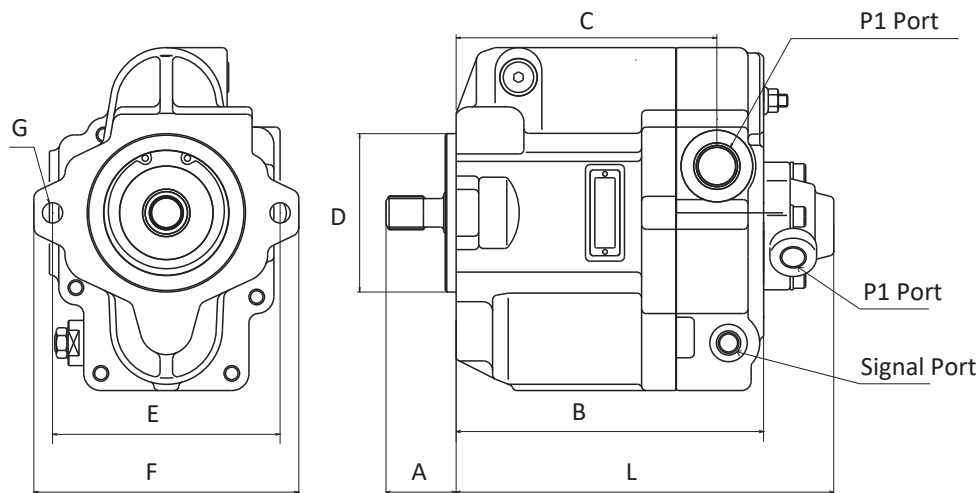
1. Various pump sizes available to match from a 1.5-tons to 5 tons small excavator.
2. High efficiency gear pump for pilot control valve is standard type, and can be used as a stable hydraulic unit for various kinds of controls for the machine.



PVK Series

- High-efficiency plunger pump specialized for load-sensitive systems.
- Featuring standard constant power control and load-sensitive system control, it efficiently utilizes engine power.
- It can be used in conjunction with DPK series control valves.
- It comes standard with a pilot gear pump.

See more details



Series Outline Dimension Table

Symbol	P1 Port	P2 Port	A	B	C	D	E	F	G	H (Signal Port)	L
PVK-2B	G3/4	G3/8	45	197.5	167.5	Ø101.6	146	170	2-Ø13	3-G1/4	242.5
PVK-3B	G1	G3/8	64	-	213	Ø127	128	164	4-Ø14	2-G1/4	306

Model	Excavator (Ton)	Capacity cm ³ /rev	Max. Pressure MPa	Max.RPM min-1	Constant horsepower control	Load sensing control	Pilot control pump
E-PVK-2B	4~5	50	24.5	2600	Standard equipment	Standard equipment	Standard equipment
E-PVK-3B	~7	72	29.4	2200	Standard equipment	Standard equipment	Standard equipment

Note 1 : The applicable weight of the excavator refers to the general application situation, and it will change according to the actual situation of different excavators.

YEOSHE BEST CHOICE
Innovative Technology

Efficient Performance
Reliable Quality and Service



YEOSHE

油聖液壓科技有限公司

YEOSHE HYDRAULICS TECHNOLOGY CO.,LTD.

413 台灣台中市霧峰區霧工一路68號

No.68, Wugong 1st Rd., Wufong Dist., Taichung City, Taiwan, 413

TEL +886-4-2333339 FAX +886-4-23333817 E-mail yeoshe@yeoshe.com.tw

東莞辦事處 Dongguan

CP +86-13600266957 (Miss Zhong)

E-mail yeoshe@yeoshe.com.tw

經銷商 Distributor



www.yeoshehydraulic.com

版權所有 翻印必究
Copyright ©2025 by YEOSHE