



<https://www.yeoshe.com.tw/>

**YEOSHE**

# **WH** Water pump

**Servo, energy-saving**

High-pressure through spindle coolant unit



YEOSHE HYDRAULICS TECHNOLOGY CO.,LTD.





## Upholding professionalism

**Quality first • Efficiency prioritized**

**Service above all • Sustainable operation**

Founded in 1989, **YEOSHE** is a professional hydraulic manufacturer in Taiwan, known for high-quality hydraulic pumps and machines. With over 30 years of experience, **YEOSHE** has built a reliable reputation in both domestic and international markets, offering piston pumps, gear & vane pumps, hydraulic machines, power units, hydraulic valves, and related components.

Continues to serve global partners with innovative technology, efficient performance, reliable quality, and trustworthy service. We invite you to become our loyal partners and promise to exceed your expectations.

**YEOSHE** maintains strict quality control and uses advanced machinery to stay competitive. Our processes are ISO certified, ensuring we meet market trends and customer needs.



## Product name

High-pressure central water discharge pump, specifically used in machining equipment, with tools featuring a central water discharge hole, significantly improving cutting performance, and using more than 3 % water-soluble cutting fluid or cutting oil.

## Product Description

### Highly Integrated and Compact

Compared to traditional high-pressure systems, the water tank, filter bucket, filter, and water pump are combined into a single product with a vertical arrangement, occupying only 25% of the footprint, and can be directly installed into the machine's water tank.

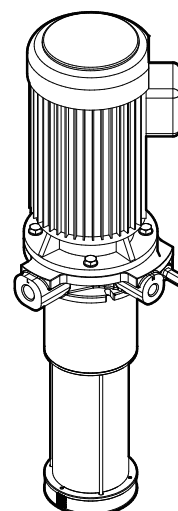
### High Pressure, Energy-Saving, and Filtration Precision

The internal water chamber uses a high-pressure plunger structure, capable of withstanding pressures up to 70 kg/cm<sup>2</sup>. With an electrically controlled configuration, it achieves energy-saving effects. The filtration precision is 400Mesh (38μm), and an optional high-pressure, high-precision filter (1250Mesh, 10μm and above) can be added.

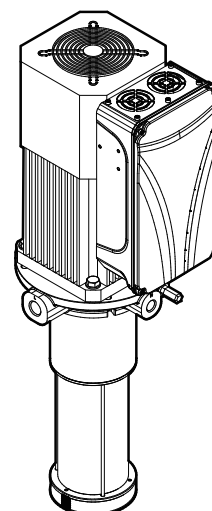
### Long Service Life and Low Wear

Using high-precision filters to protect the plunger, the system automatically performs physical cleaning and waste discharge, extending the pump's service life and reducing the frequency of filter replacements.

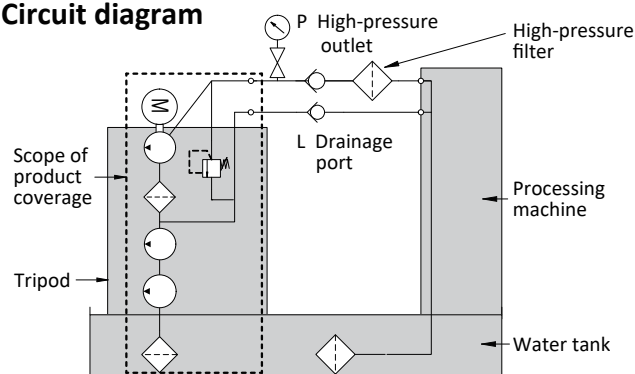
Induction motor



Servo motor



Circuit diagram



## Specification

Model Specification Table (1740 RPM) 60HZ

	Model	Pump Output cc/rev	Pump Displacement LPM(L/nim) 1740RPM	Maximum Pressure pressure kg/cm2	Required Motor motor HP(KW)
○	WH216S-15A33	16	27.84	32	1.98(1.48)
○	WH216S-22A50	16	27.84	50	3.09(2.31)
※	WH219S-22A40	19	33.06	40	2.94(2.19)
※	WH219S-37A68	19	33.06	68	5.00(3.73)
※	WH224S-37A54	24	41.76	54	5.00(3.73)
※	WH228S-37A46	28	48.72	46	5.00(3.73)
○	WH228S-55A68	28	48.72	68	7.36(5.49)
○	WH228S-75A92	28	48.72	92	9.96(7.43)

Model Specification Table (1450 RPM) 50HZ

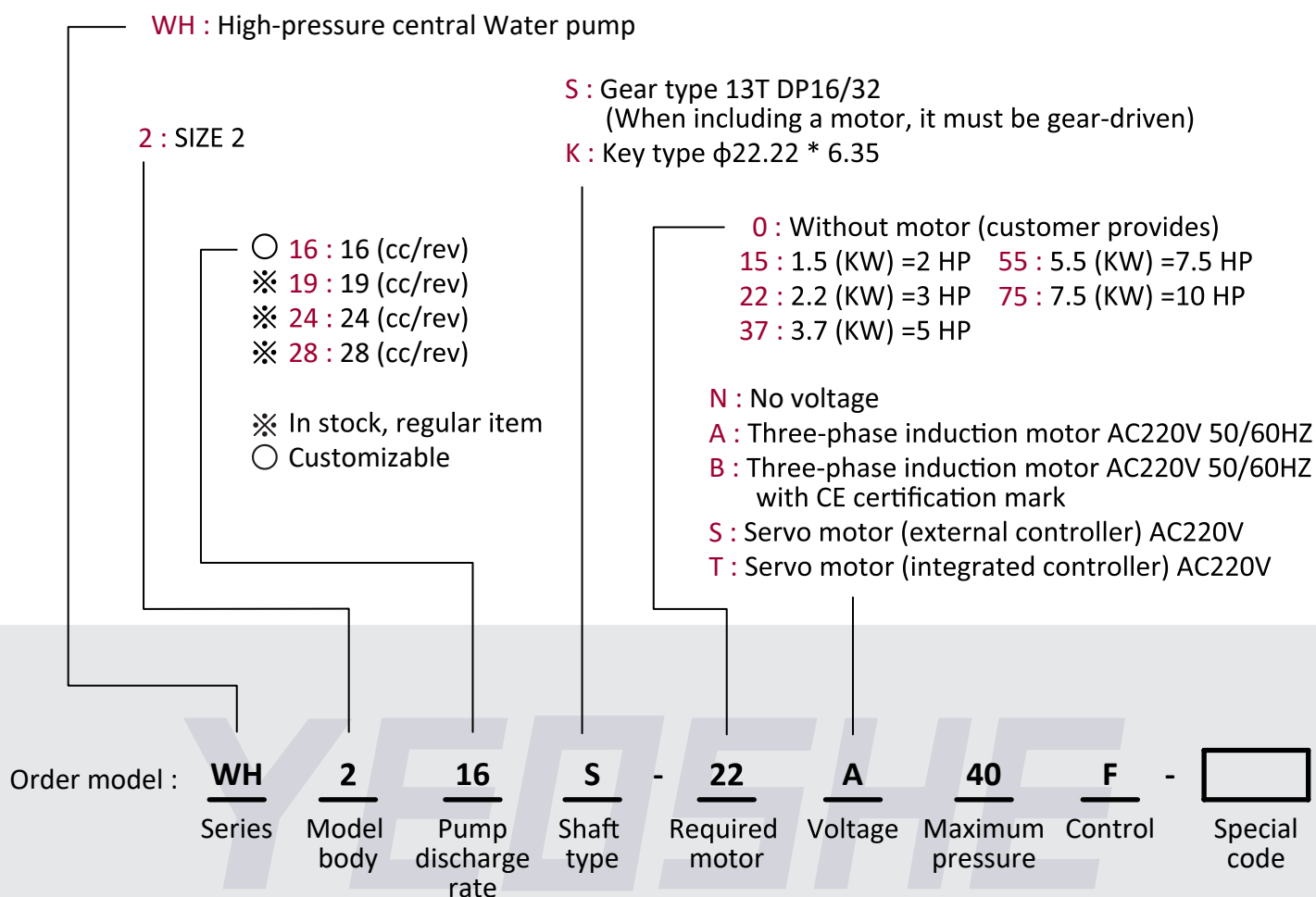
○	WH216S-15A40	16	23.2	40	2.06(1.54)
○	WH222S-37A70	22	31.9	70	4.96(3.70)
※	WH219S-22A40	19	27.55	40	3.09(2.31)
※	WH224S-37A55	24	34.8	65	5.03(3.75)
※	WH228S-37A55	28	40.6	55	4.96(3.70)

※ In stock, regular item, ○ Customizable

Our company's related products are subject to design changes without prior notice.



## Model description



**00** : No pressure set  
(requires customer-provided motor)

**33** : 33 kg/cm<sup>2</sup>    **55** : 55 kg/cm<sup>2</sup>  
**40** : 40 kg/cm<sup>2</sup>    **68** : 68 kg/cm<sup>2</sup>  
**46** : 46 kg/cm<sup>2</sup>    **70** : 70 kg/cm<sup>2</sup>  
**50** : 50 kg/cm<sup>2</sup>

( Pressure when the outlet is closed. )  
The above pressure must match the motor and discharge rate.  
( please refer to the specification sheet. )

**No notation** : Standard type  
**F** : Includes frequency converter

**Special code usage :**  
For customer-specific product combinations (water pump, accessories, stand). When you purchase the same multiple items more than once, we can create a dedicated order code for you to facilitate ordering.

This model does not include accessories or a stand.  
Our company's related products are subject to design changes without prior notice.

See more details



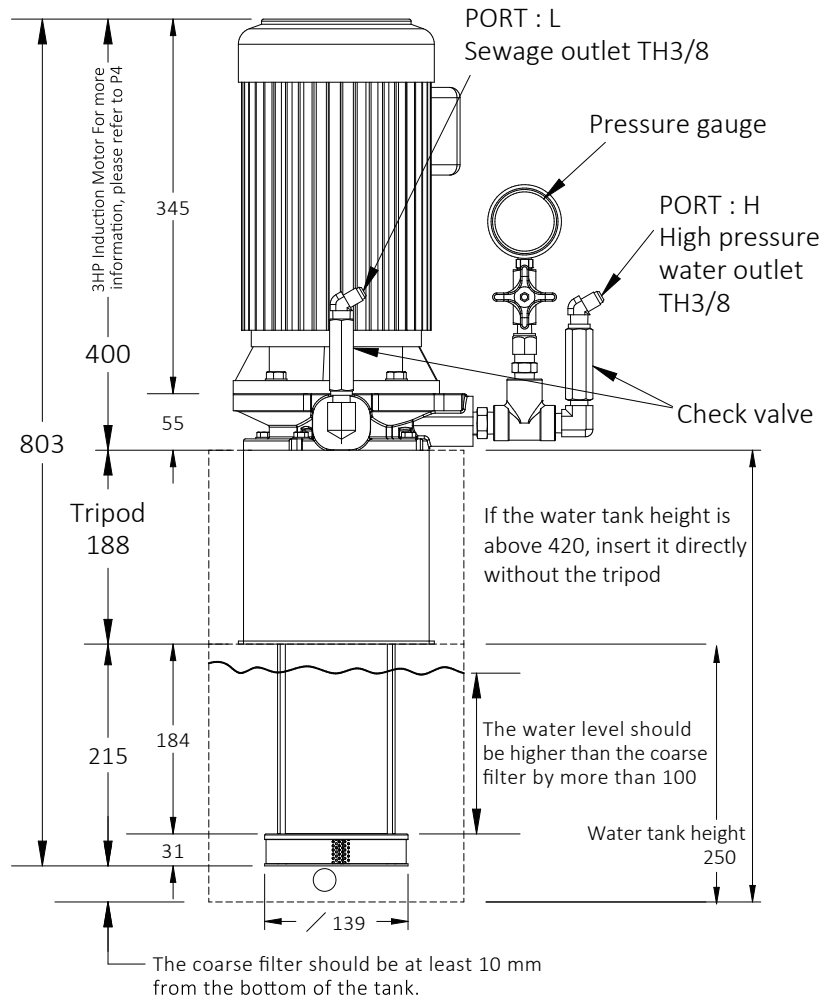
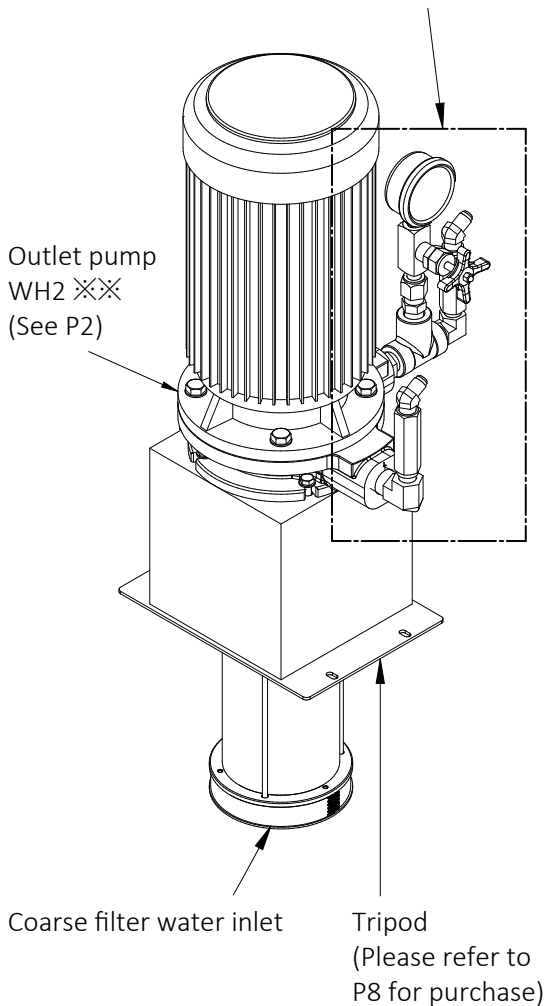
## Appearance size WH2 (Full Set)

Complete configuration, ready for direct installation on the water tank.

Accessories

WH2-P1026

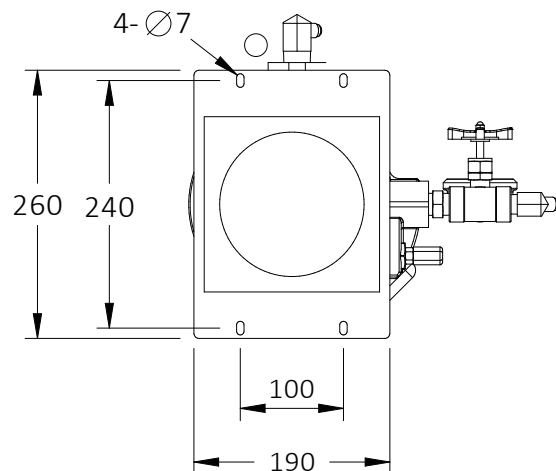
(Please refer to P7 for purchase)



### Instructions for use

1. The high-pressure central water pump is recommended to be installed with a stand (refer to P8) at the end of the filtration system, ensuring the inlet is submerged more than 100mm below the liquid surface.
2. The H high-pressure outlet should be connected to a check valve and pressure gauge (refer to P7 accessories) and then attached to the central water line of the mechanical cutting tool.
3. The L drainage outlet should be fitted with a check valve (refer to P7 accessories) and linked to the front end of the mechanical filtration system.

### Tripod interface



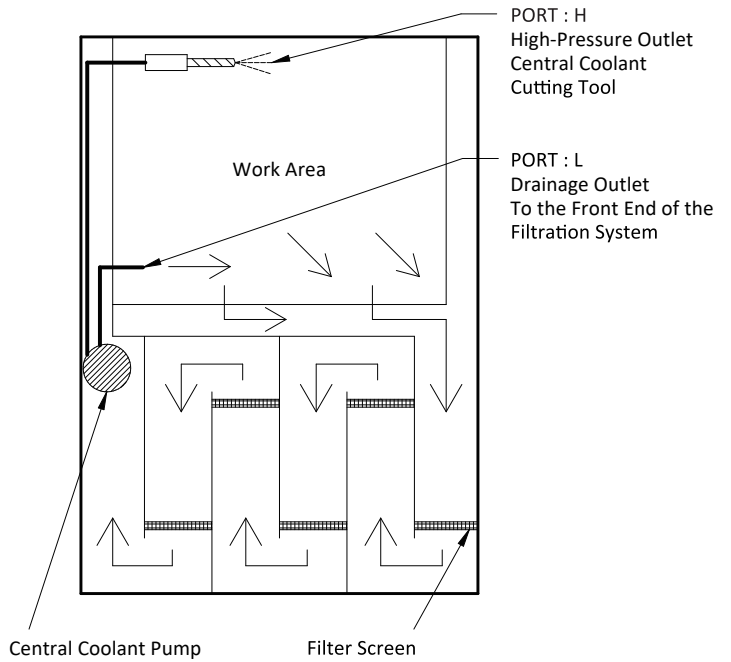
Our company reserves the right to make design changes to related products without prior notice.



# Instructions for use

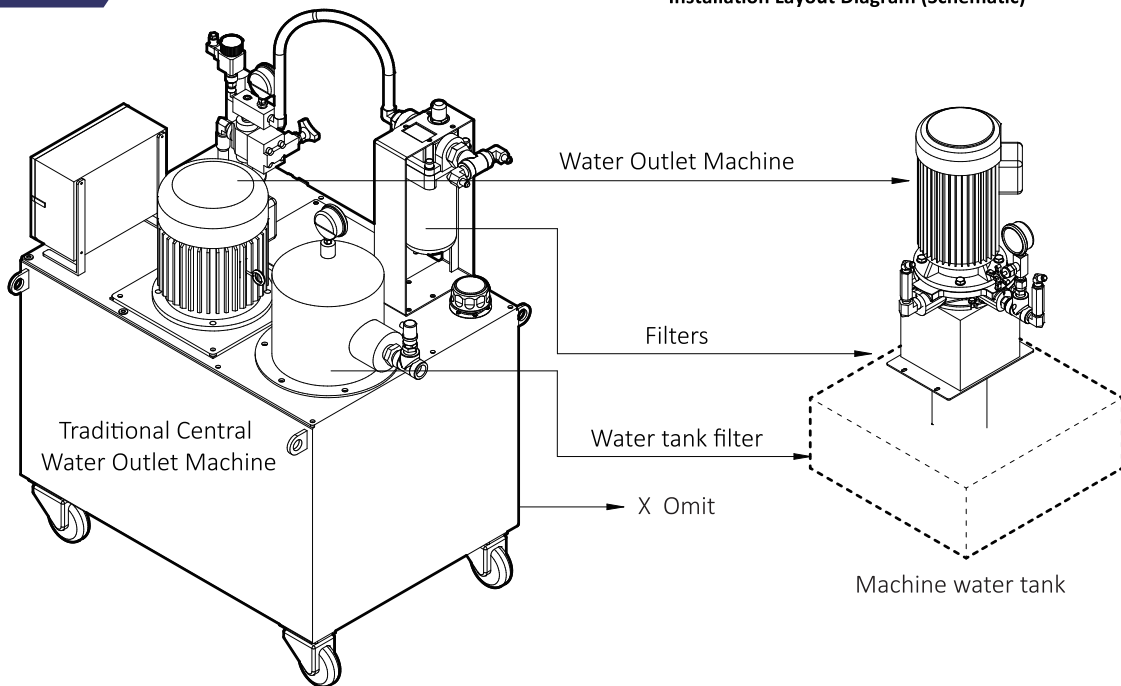


1. The high-pressure central water pump is recommended to be installed with a support frame (refer to P8 Support Frame) at the end of the filtration system, with the inlet submerged at least 100mm below the liquid surface.
2. The high-pressure outlet (H) should be equipped with a check valve and a pressure gauge (refer to P7 Accessories) and connected to the central coolant supply line of the mechanical cutting tool.
3. The drainage outlet (L) is recommended to be equipped with a check valve (refer to P7 Accessories) and connected to the front end of the mechanical filtration system. Do not allow direct back suction.
4. The high-pressure central water pump contains an internal filter for protection and should be used with an external filtration system. The external filter screen should be cleaned regularly to ensure longevity.

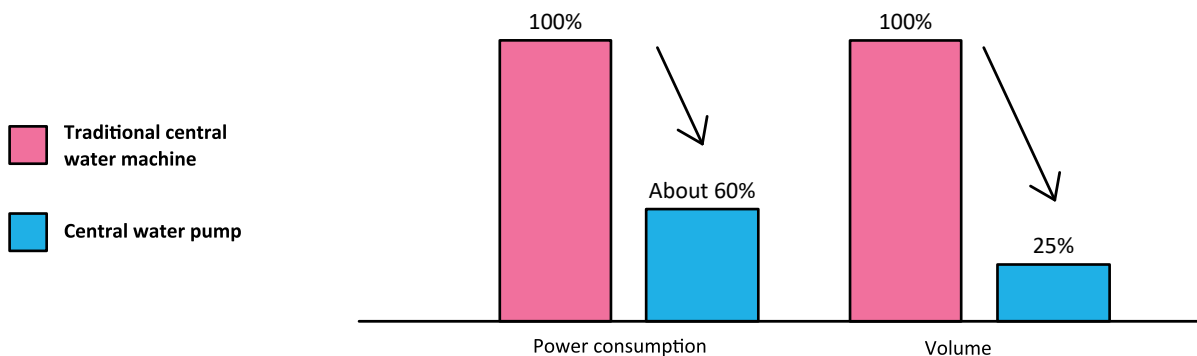


Installation Layout Diagram (Schematic)

## Compact size

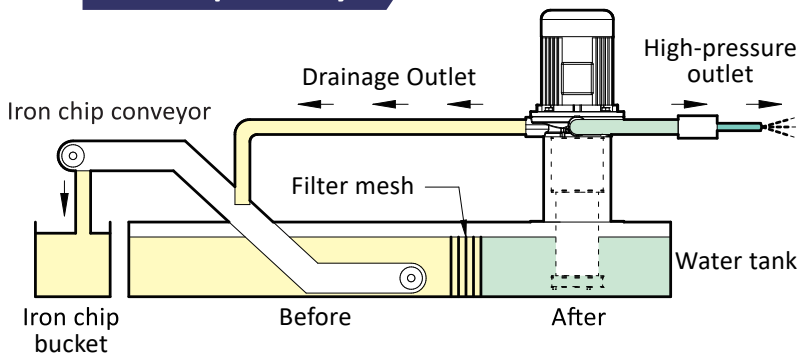


## High-pressure, energy-saving



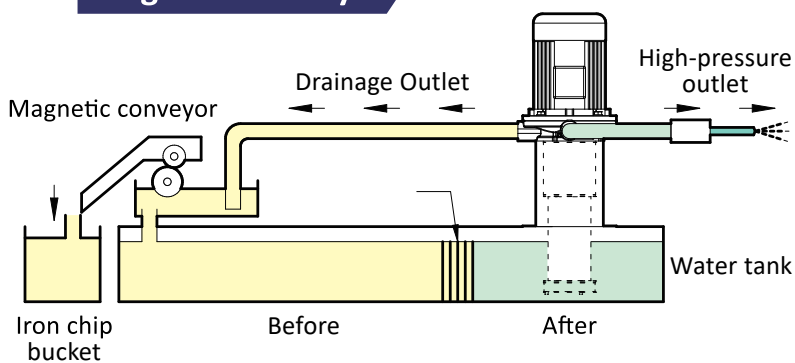
## Pipeline configuration

### Iron chip conveyor



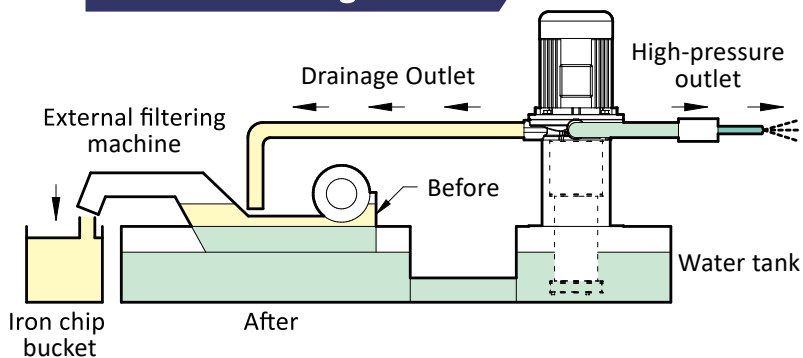
- **Applicable Machines :**  
NC Lathe, Milling Machine
- **Chip Recovery :**  
Filter iron chips through an iron chip conveyor
- **Type of Chips :**  
Larger iron chips or iron powder and particles
- **Filtration Method :**  
Filter mesh, replace regularly

### Magnetic conveyor



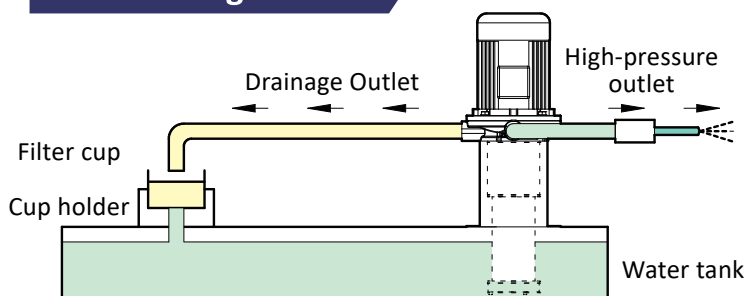
- **Applicable Machines :**  
Grinding Machine
- **Chip Recovery :**  
Filter iron powder through a magnetic conveyor
- **Type of Chips :**  
Smaller magnetic iron chips or iron powder
- **Filtration Method :**  
Filter mesh, replace regularly

### External filtering machine



- **Applicable Machines :**  
External Filtering Machine
- **Chip Recovery :**  
Filter non-magnetic impurities through an external filtering machine
- **Type of Chips :**  
Copper, aluminum, or non-magnetic dust
- **Filtration Method :**  
Filter mesh, replace regularly

### Non-filtering machine



- **Applicable Machines :**  
Traditional Machines (Traditional Drill Press)
- **Chip Recovery :**  
Isolate iron powder particles through a filter cup
- **Type of Chips :**  
General iron powder and particles
- **Filtration Method :**  
Filter cup, replace regularly

**YEOSHE BEST CHOICE**  
**Innovative Technology**

**Efficient Performance**  
**Reliable Quality and Service**



**油聖液壓科技有限公司**  
**YEOSHE YEOSHE HYDRAULICS TECHNOLOGY CO.,LTD.**

413 台灣台中市霧峰區霧工一路68號

No.68, Wugong 1st Rd., Wufong Dist., Taichung City, Taiwan, 413

**TEL** +886-4-2333339 **FAX** +886-4-23333817 **E-mail** yeoshe@yeoshe.com.tw

東莞辦事處 Dongguan

**CP** +86-13600266957 (Miss Zhong)

**E-mail** yeoshe@yeoshe.com.tw

經銷商 Distributor



[www.yeoshehydraulic.com](http://www.yeoshehydraulic.com)

版權所有 翻印必究  
Copyright ©2025 by YEOSHE