



<https://www.yeoshe.com.tw/>

**YEOSHE**

# **WH** Water pump

**Servo, energy-saving**

**High-pressure through spindle coolant unit**



YEOSHE HYDRAULICS TECHNOLOGY CO.,LTD.

# WH High Pressure Central Water Pump

## Product name

High-pressure central water pump, specifically used in machining equipment. The tools have a central water outlet hole, significantly improving cutting performance. It uses over 3% water-soluble cutting fluid or cutting oil.

## Product Description

### Highly integrated and compact

Unlike traditional high-pressure systems, this vertical design integrates the water tank, filter barrel, filter, and pump into one product, occupying only 25% of the space and allowing direct installation in the machine's water tank.

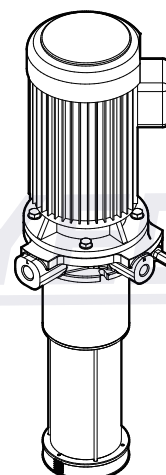
### High pressure, energy-saving

The pump's high-pressure plunger withstands up to 70 kg/cm<sup>2</sup>. Its electric control allows on-demand switching, enhancing energy efficiency.

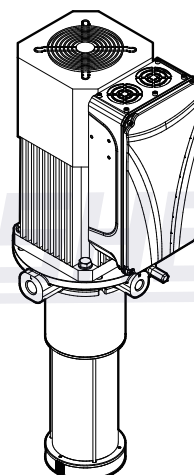
### Long lifespan, low wear

A high-precision filter safeguards the plunger, while the physical cleaning structure prolongs the filter's lifespan, cutting down on replacements.

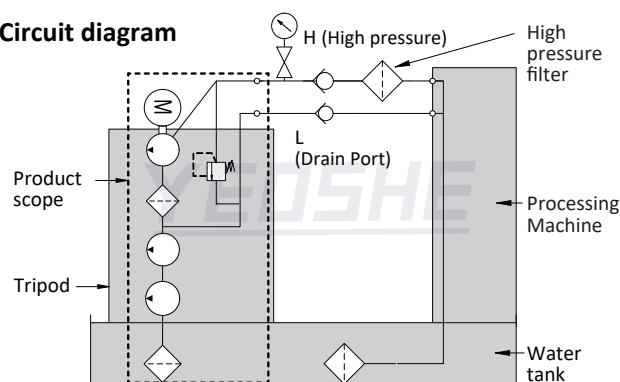
Induction Motor



Servo Motor



Circuit diagram



## Specification

|                             |  |  |
|-----------------------------|--|--|
| Pump Type                   | High-Pressure Plunger Type   | -  |
| Displacement                | H High-pressure Outlet :<br>16 、 19 、 24 、 28 cc/rev   | -  |
|                             | L Drain Port : 10 cc/rev   | -  |
| Maximum Pressure            | 70kg/cm <sup>2</sup>   | When the outlet is closed, the pressure reflects the operating pressure efficiency, which may decrease due to the outlet orifice size. |
| Pumped Fluid                | For water-soluble cutting fluid or cutting oil with a concentration above 3 %.<br>Viscosity : 2-15 cSt | Water has a viscosity of approximately 1 cSt and lacks anti-rust properties; it must not be used.                                      |
| Max. Rotational Speed       | 2000 RPM   | -  |
| Filtration Accuracy         | 400Mesh (38 μ m)   | For high-pressure discharge, a high-precision filter can be optionally installed.  |
| Max. Passable Particle Size | Diameter : 2 mm  | Particles larger than 2 mm will be blocked, while particles 2 mm or smaller will be drawn in and discharged through the drain outlet.  |
| Noise Level                 | 56~76 dB   | 1.5 meters from the water outlet pump  |

Our company reserves the right to make design changes to related products without prior notice.

Order Model

| Required motor HP(KW) | 60HZ 1740RPM                        |                    |                                |                     | 50HZ 1450RPM                        |                    |                                |                     |
|-----------------------|-------------------------------------|--------------------|--------------------------------|---------------------|-------------------------------------|--------------------|--------------------------------|---------------------|
|                       | Maximum Pressure kg/cm <sup>2</sup> | Pump Output cc/rev | Pump Disp. LPM (L/min) 1740RPM | Model Specification | Maximum Pressure kg/cm <sup>2</sup> | Pump Output cc/rev | Pump Disp. LPM (L/min) 1450RPM | Model Specification |
| 1 (0.75)              | 15                                  | 16                 | 27.84                          | ※ WH216S-17A15      | 18                                  | 16                 | 23.2                           | ※ WH216S-07A18      |
| 2 (1.5)               | 21                                  | 24                 | 41.76                          | ※ WH224S-15A21      | 25                                  | 24                 | 34.8                           | ※ WH224S-15A25      |
|                       | 27                                  | 19                 | 33.06                          | ※ WH219S-15A27      | 32                                  | 19                 | 27.55                          | ※ WH219S-15A32      |
|                       | 32                                  | 16                 | 27.84                          | ※ WH216S-15A32      | 38                                  | 16                 | 23.2                           | ※ WH216S-15A38      |
| 3 (2.2)               | 27                                  | 28                 | 48.72                          | ※ WH228S-22A27      | 32                                  | 28                 | 40.6                           | ※ WH228S-22A32      |
|                       | 32                                  | 24                 | 41.76                          | ※ WH224S-22A32      | 38                                  | 24                 | 34.8                           | ※ WH224S-22A38      |
|                       | 40                                  | 19                 | 33.06                          | ※ WH219S-22A40      | 48                                  | 19                 | 27.55                          | ※ WH219S-22A48      |
|                       | 48                                  | 16                 | 27.84                          | ※ WH216S-22A48      | 56                                  | 16                 | 23.2                           | ※ WH216S-22A56      |
| 5 (3.7)               | 46                                  | 28                 | 48.72                          | ※ WH228S-37A46      | 55                                  | 28                 | 40.6                           | ※ WH228S-37A55      |
|                       | 54                                  | 24                 | 41.76                          | ※ WH224S-37A54      | 65                                  | 24                 | 34.8                           | ※ WH224S-37A65      |
|                       | 68                                  | 19                 | 33.06                          | ※ WH219S-37A68      | 80                                  | 19                 | 23.2                           | ※ WH219S-37A80      |
| 7.5 (5.5)             | 68                                  | 28                 | 48.72                          | ※ WH228S-55A68      | 83                                  | 28                 | 40.6                           | ※ WH228S-55A83      |
|                       | 80                                  | 24                 | 41.76                          | ○ WH224S-55A80      | 95                                  | 24                 | 34.8                           | ○ WH224S-55A95      |
|                       | 98                                  | 19                 | 33.06                          | ○ WH219S-55A98      | 110                                 | 19                 | 23.2                           | ○ WH219S-55A110     |
| 10 (7.5)              | 92                                  | 28                 | 48.72                          | ○ WH228S-75A92      | 110                                 | 28                 | 40.6                           | ○ WH228S-75A110     |
|                       | 105                                 | 24                 | 41.76                          | ○ WH224S-75A105     | 123                                 | 24                 | 34.8                           | ○ WH224S-75A123     |
|                       | 130                                 | 19                 | 33.06                          | ○ WH219S-75A130     | 155                                 | 19                 | 23.2                           | ○ WH219S-75A155     |

※ In stock, regular item, ○ Customizable

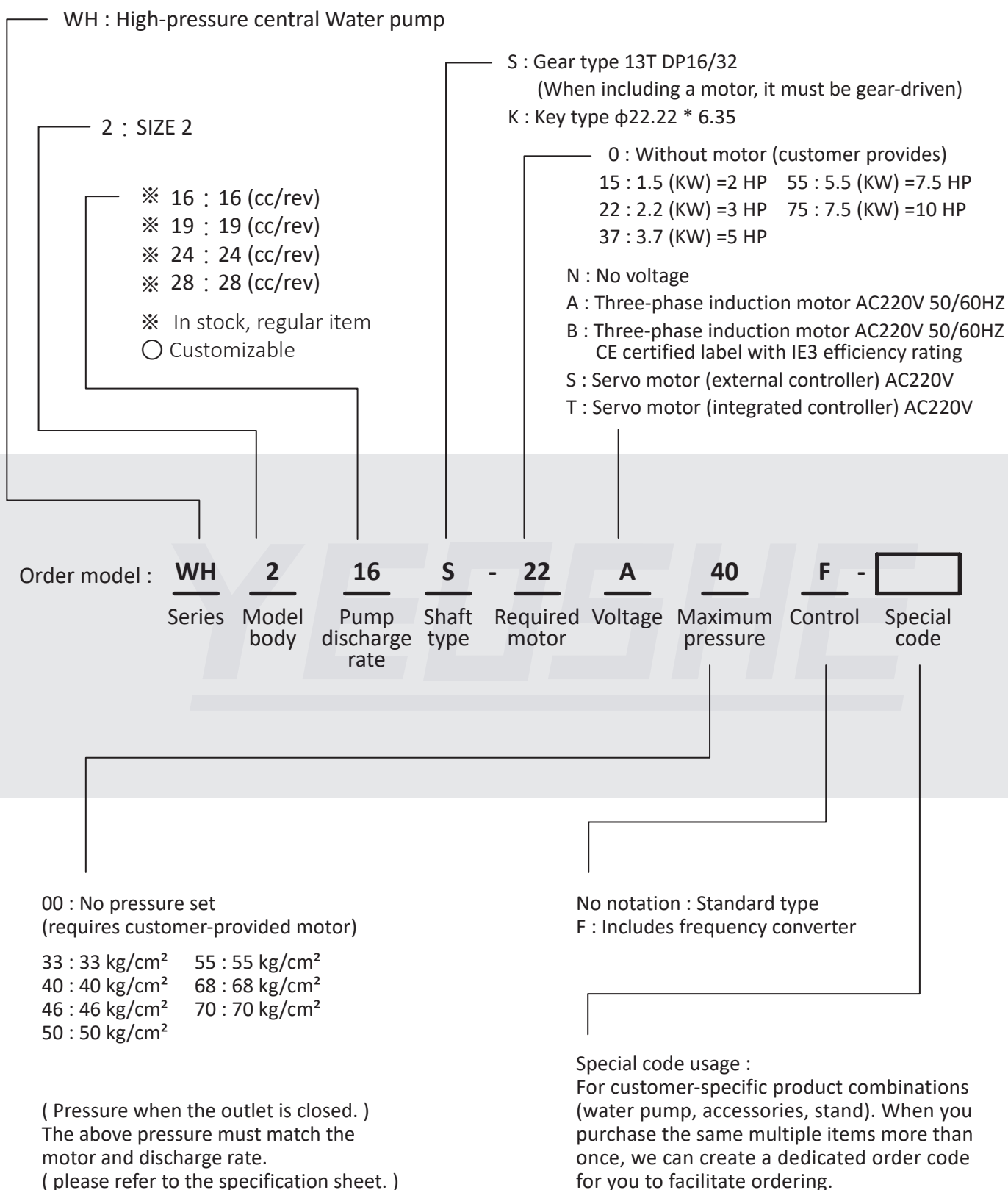
Our company reserves the right to make design changes to related products without prior notice.





# WH High Pressure Central Water Pump

## Model description

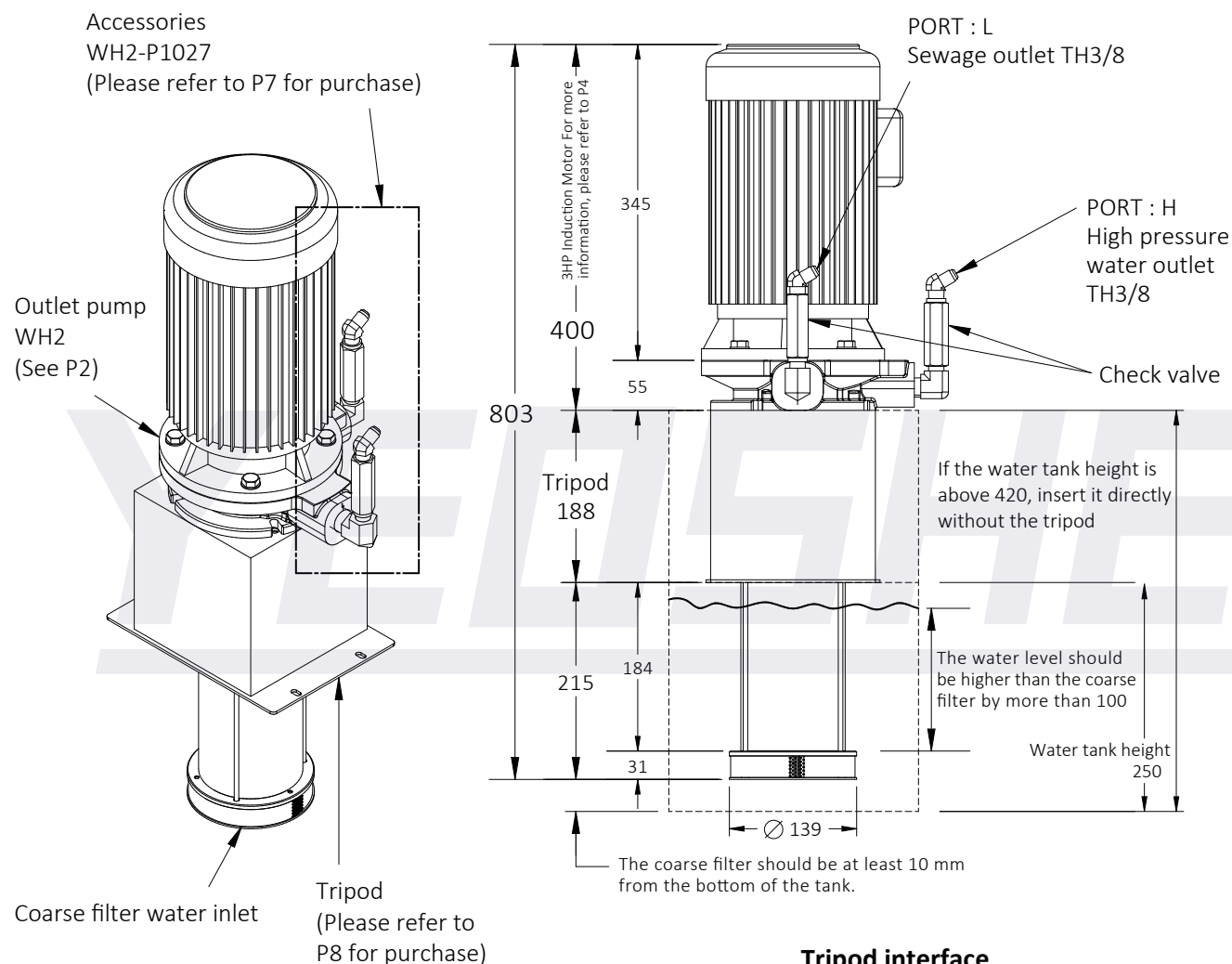


This model does not include accessories or a stand.

Our company reserves the right to make design changes to related products without prior notice.

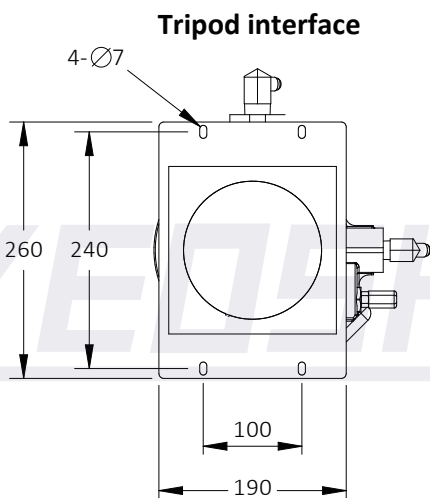
## Appearance size WH2 (Full Configuration)

Complete configuration, ready for direct installation on the water tank.



### Instructions for use

1. It is recommended to install the high-pressure center outlet pump with a mounting bracket (see P9), positioned at the end of the filtration system. The inlet should be submerged at least 100 mm below the liquid surface.
2. The H high-pressure outlet should be connected with a check valve and a pressure gauge (see P8 Accessories), and linked to the machine tool's center-through coolant line.
3. The L drain port should be connected with a check valve (see P8 Accessories), and routed to the front end of the machine's filtration system.
4. Initial pressure setting: The factory default pressure is 0. After startup and air removal, adjust the pressure—turning clockwise increases pressure, counterclockwise decreases it.

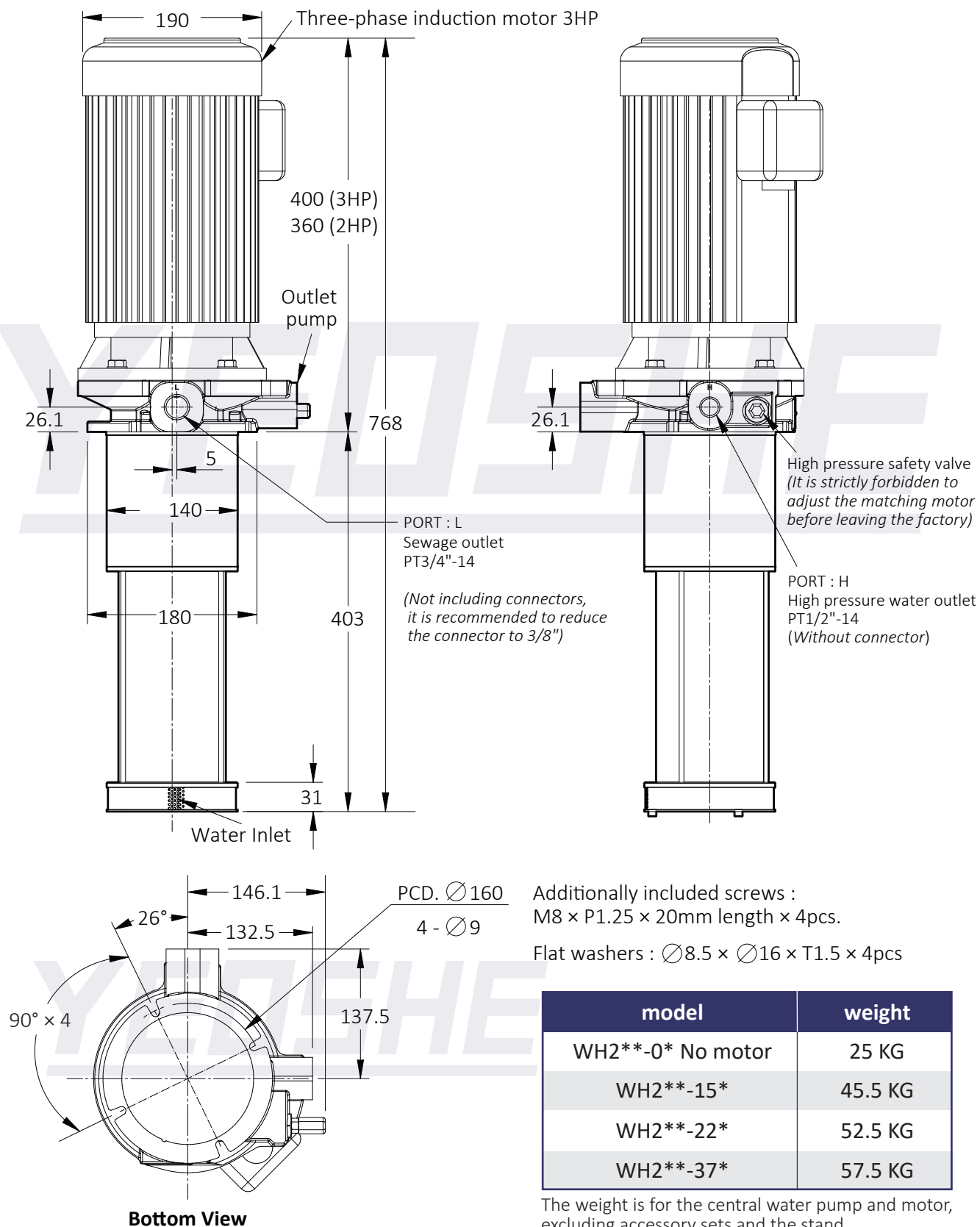


## WH High Pressure Central Water Pump

## Appearance size WH2

(Water pump and three-phase induction motor)

During use, pipeline accessories (refer to P7) and a stand (refer to P8) should be utilized.



Additionally included screws :  
M8 × P1.25 × 20mm length × 4pcs.  
Flat washers :  $\varnothing 8.5 \times \varnothing 16 \times T1.5 \times 4\text{pcs}$

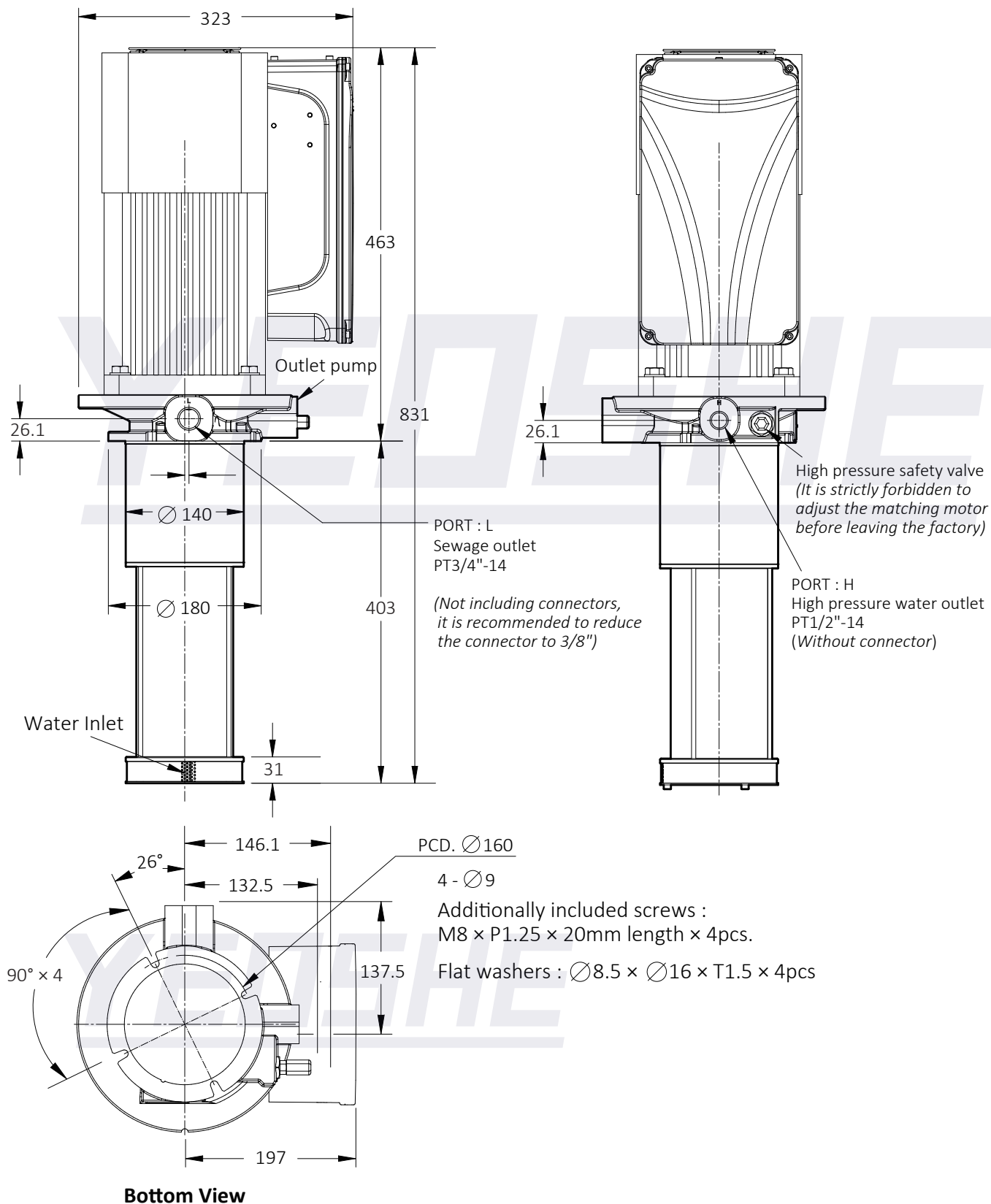
| model             | weight  |
|-------------------|---------|
| WH2**-0* No motor | 25 KG   |
| WH2**-15*         | 45.5 KG |
| WH2**-22*         | 52.5 KG |
| WH2**-37*         | 57.5 KG |

The weight is for the central water pump and motor, excluding accessory sets and the stand.

## Appearance size WH2

(Water pump with integrated servo motor controller)

During use, pipeline accessories (refer to P7) and a stand (refer to P8) should be utilized.



WH

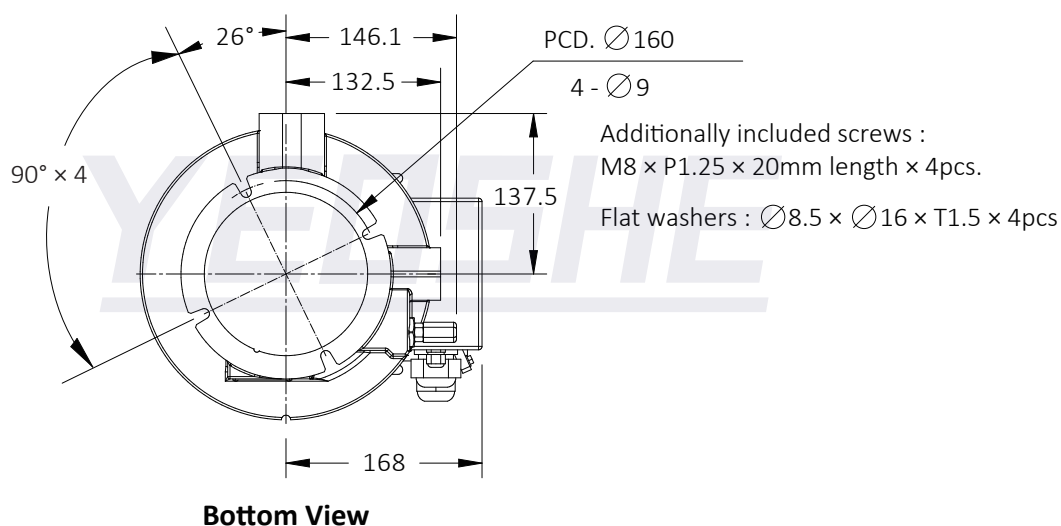
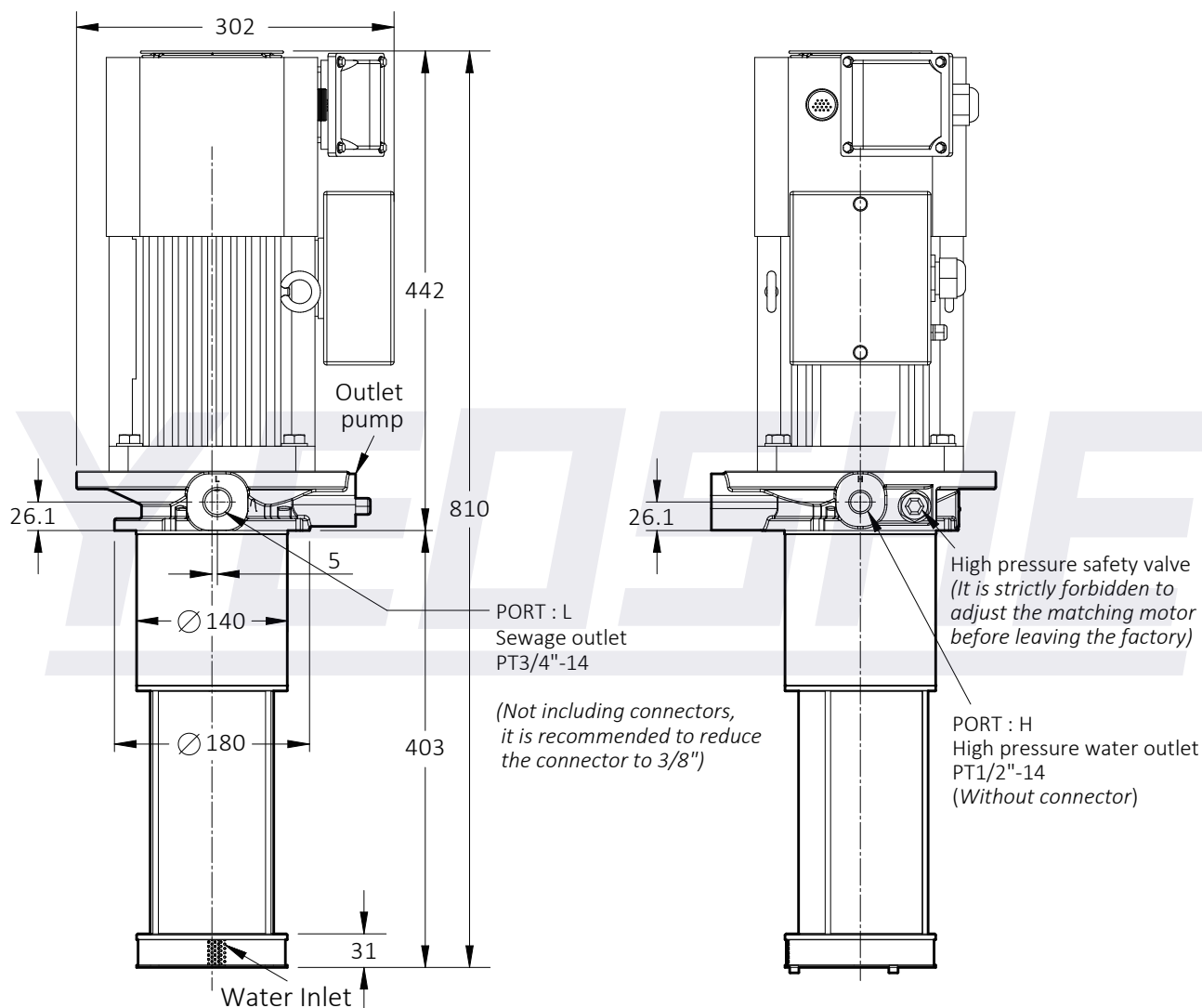
6

# WH High Pressure Central Water Pump

## Appearance size WH2

(Water pump with servo motor controller located externally)

During use, pipeline accessories (refer to P7) and a stand (refer to P8) should be utilized.

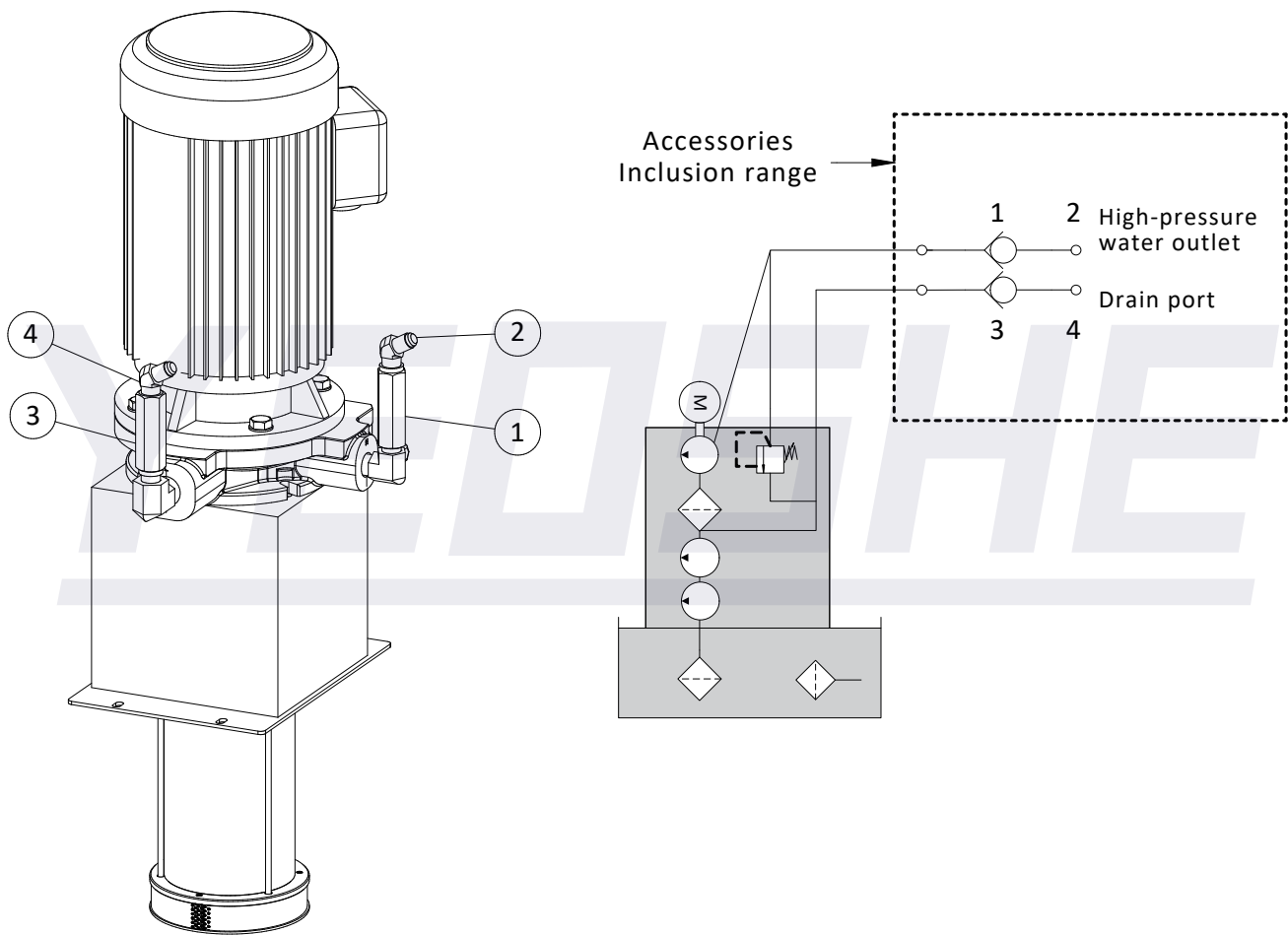


Our company reserves the right to make design changes to related products without prior notice.



Accessories combination  
WH2-P1026

(Standard accessories)



WH2-P1027



Standard accessories

- 1. Equipped with a check valve to prevent cutting fluid from flowing back into the tank, avoiding delayed water output.
- 2. Equipped with a pipe connector for easy connection to the machine.

| Item | Product     | Specifications |
|------|-------------|----------------|
| 1    | Check Valve | 3/8"           |
| 2    | Connector   | 45° TH3/8"     |
| 3    | Check Valve | 3/8"           |
| 4    | Connector   | 45° TH3/8"     |

For other configuration needs, special orders are required.  
Note 1: TH refers to a 37° MALE connector (ISO 8434-2).

Our company reserves the right to make design changes to related products without prior notice.

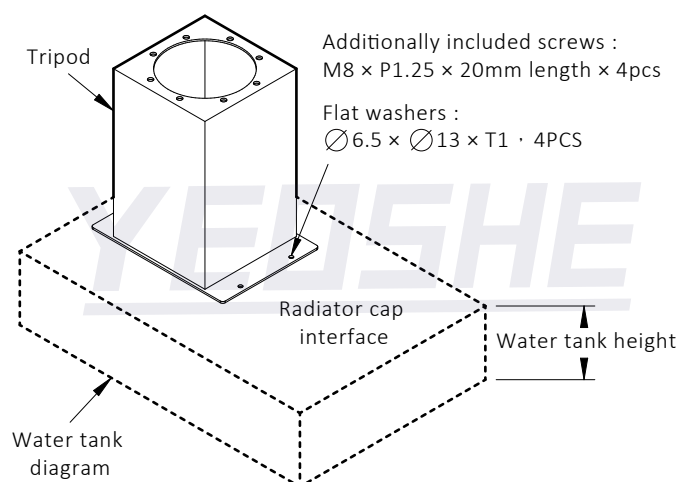
## Tripod size

### Tripod Model Specification Table

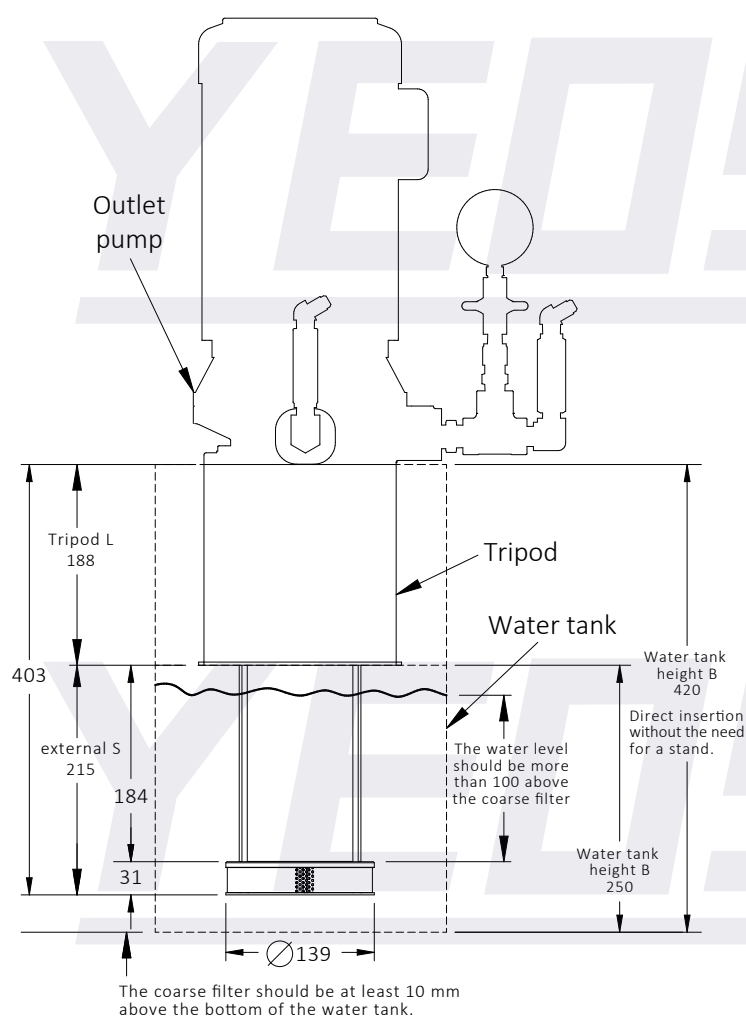
| Model         | Water Tank Height (B) | Stand Length (L) | External (S) |
|---------------|-----------------------|------------------|--------------|
| Without stand | 420                   | --               | --           |
| WH2-F250      | 250                   | 188              | 215          |
| WH2-F200      | 200                   | 238              | 165          |

### Tripod Description

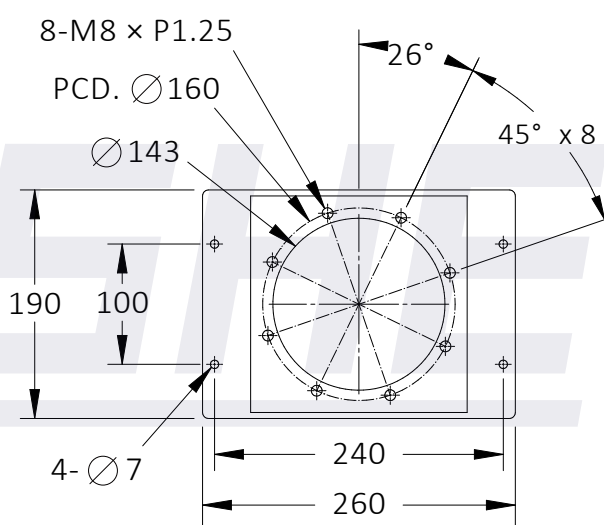
1. If the water tank height reaches 420 or above, the water pump can be directly inserted for use. If the height is less than 420, a stand is required.
2. The water level should be more than 100 above the coarse filter.
3. The coarse filter should be at least 10 mm above the bottom of the water tank.



### Tripod installation (schematic)

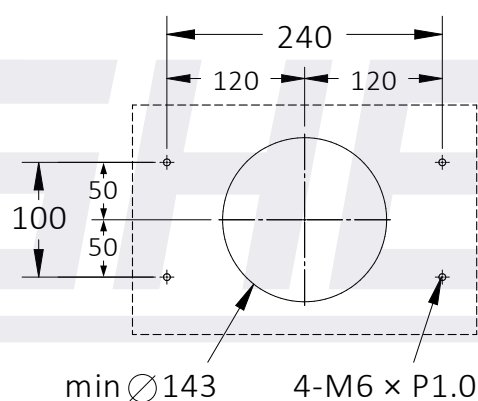


### Pump interface



### Water tank cover interface

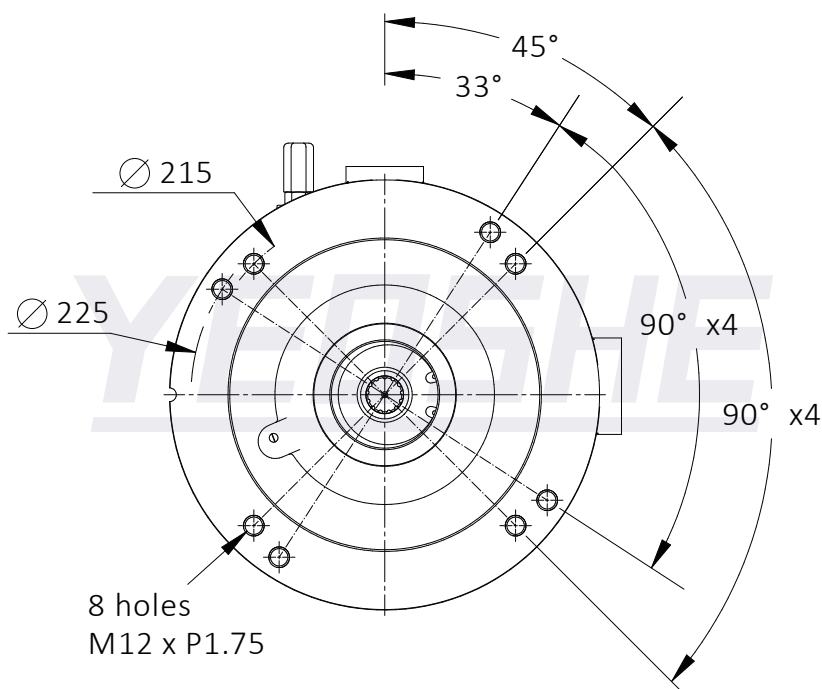
(Requires configuration at the end the of filtration system)



Our company reserves the right to make design changes to related products without prior notice.

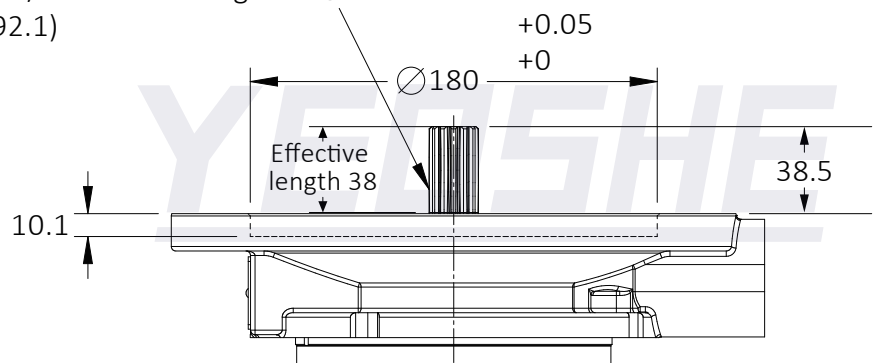
Water Outlet Pump Interface and Shaft

WH  
10

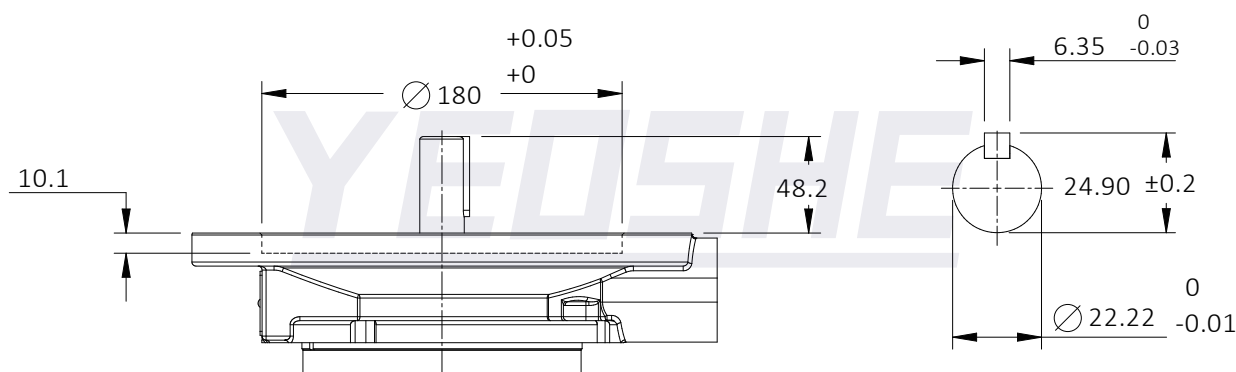


Spindle type : S

13T DP16/32 Pressure angle 30°  
(ANSI B92.1)



Spindle type : K

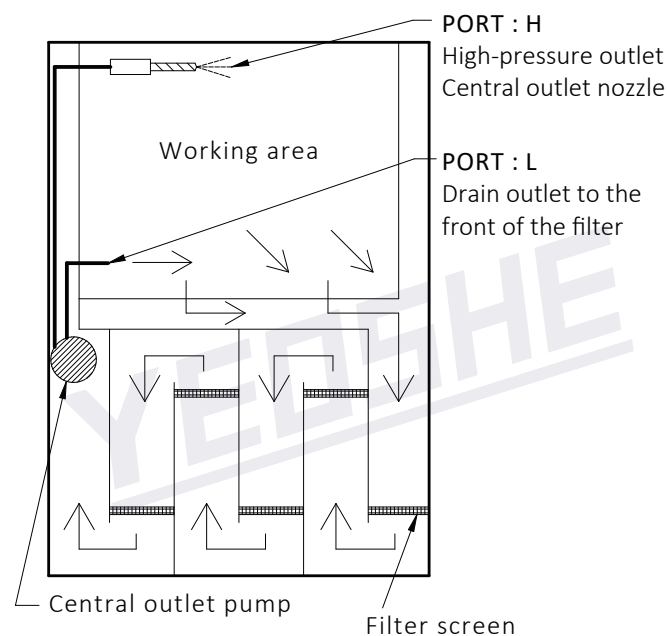


Our company reserves the right to make design changes to related products without prior notice.

# WH High Pressure Central Water Pump

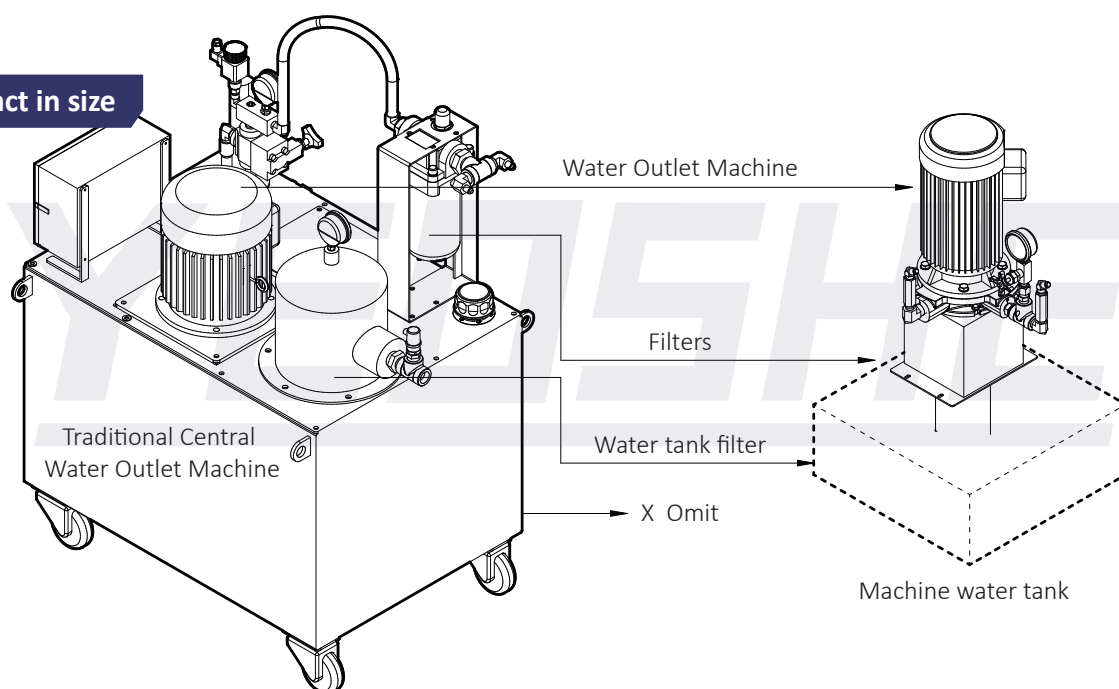
## Instructions for use

1. It is recommended to install the high-pressure center outlet pump using a mounting bracket (see P8 Bracket), positioned at the end of the filtration system. The inlet should be submerged more than 100 mm below the liquid surface.
2. The H high-pressure outlet should be connected with a check valve and a pressure gauge (see P7 Accessories), and routed to the center-through coolant line of the cutting tool.
3. The L drain port is recommended to be connected with a check valve (see P7 Accessories) and linked to the front section of the machine's filtration system. Do not connect directly for suction return.
4. Initial pressure setting: Factory default pressure is set to 0. After startup and air removal, adjust the pressure—turn clockwise to increase pressure, counterclockwise to decrease.
5. The high-pressure center outlet pump is equipped with an internal filter for protection. It must also be used in conjunction with an external filtration system. The external filter mesh should be cleaned regularly to ensure long service life.

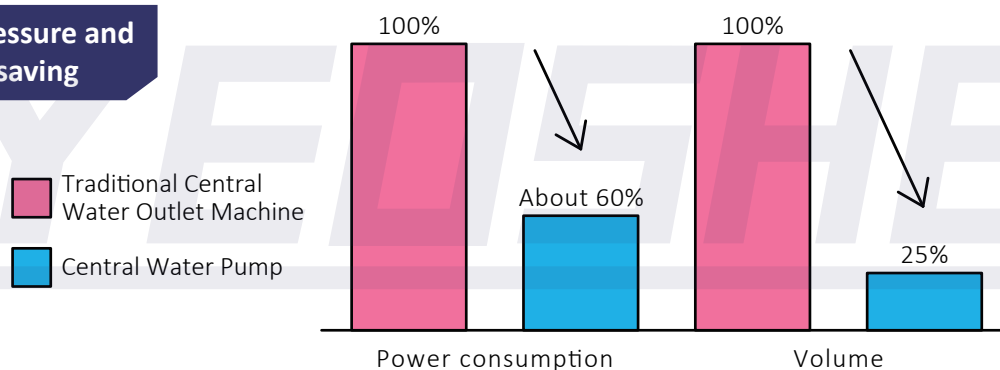


Installation configuration diagram (schematic)

## Compact in size



## High pressure and energy-saving

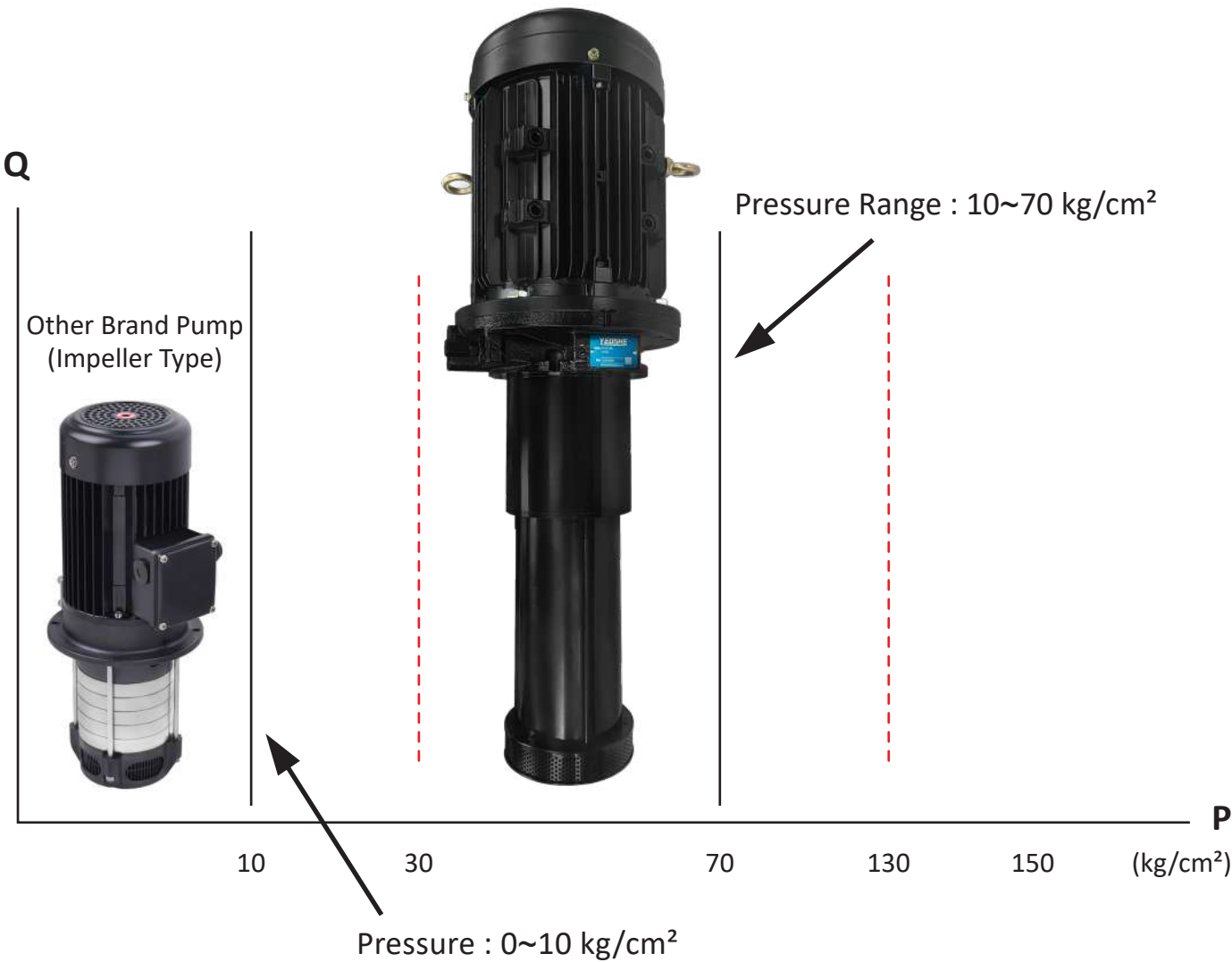


Our company reserves the right to make design changes to related products without prior notice.

Product Pressure Range

WH  
12

WH High-Pressure Pump  
(Plunger Type)

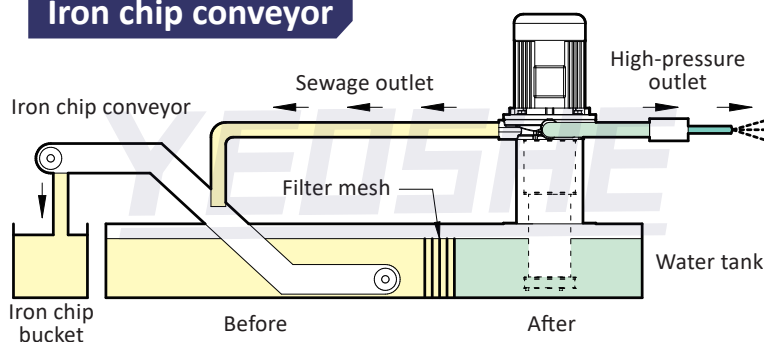




# WH High Pressure Central Water Pump

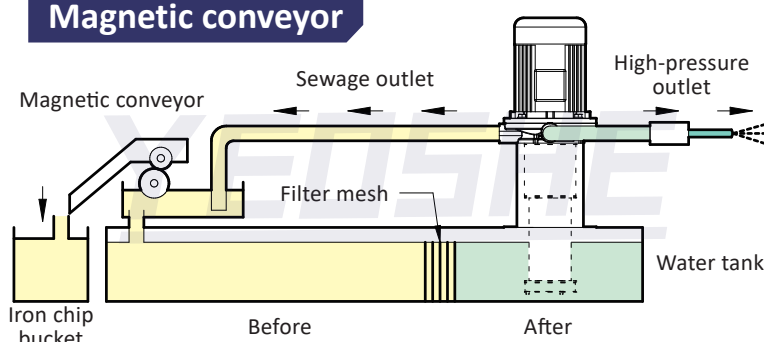
## Pipeline configuration

### Iron chip conveyor



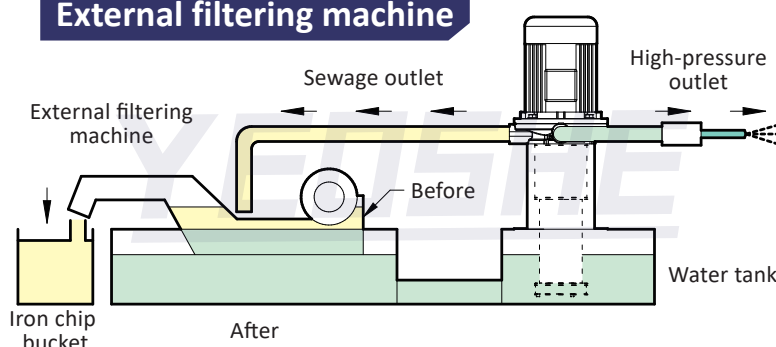
- **Applicable Machines :**  
NC Lathe, Milling Machine
- **Chip Recovery :**  
Filter iron chips through an iron chip conveyor
- **Type of Chips :**  
Larger iron chips or iron powder and particles
- **Filtration Method :**  
Filter mesh, replace regularly

### Magnetic conveyor



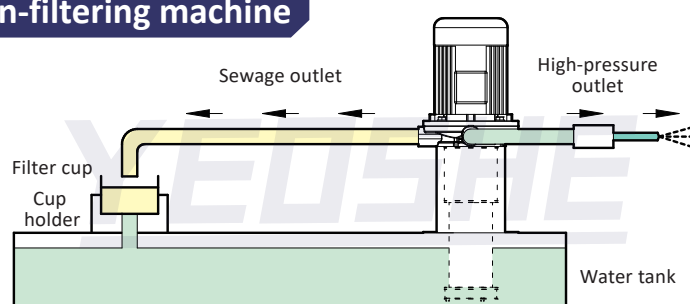
- **Applicable Machines :**  
Grinding Machine
- **Chip Recovery :**  
Filter iron powder through a magnetic conveyor
- **Type of Chips :**  
Smaller magnetic iron chips or iron powder
- **Filtration Method :**  
Filter mesh, replace regularly

### External filtering machine



- **Applicable Machines :**  
External Filtering Machine
- **Chip Recovery :**  
Filter non-magnetic impurities through an external filtering machine
- **Type of Chips :**  
Copper, aluminum, or non-magnetic dust
- **Filtration Method :**  
Filter mesh, replace regularly

### Non-filtering machine



- **Applicable Machines :**  
Traditional Machines  
(Traditional Drill Press)
- **Chip Recovery :**  
Isolate iron powder particles through a filter cup
- **Type of Chips :**  
General iron powder and particles
- **Filtration Method :**  
Filter cup, replace regularly

Our company reserves the right to make design changes to related products without prior notice.

**YEOSHE BEST CHOICE**  
**Innovative Technology**

**Efficient Performance**  
**Reliable Quality and Service**



**油聖液壓科技有限公司**

**YEOSHE YEOSHE HYDRAULICS TECHNOLOGY CO.,LTD.**

413 台灣台中市霧峰區霧工一路68號

No.68, Wugong 1st Rd., Wufong Dist., Taichung City, Taiwan, 413

**TEL** +886-4-2333339 **FAX** +886-4-23333817 **E-mail** yeoshe@yeoshe.com.tw

東莞辦事處 Dongguan

**CP** +86-13600266957 (Miss Zhong)

**E-mail** yeoshe@yeoshe.com.tw

上海辦事處 Shanghai

**CP** +86-15021931394 (Mr. Wu)

**CP** +86-18939716986 (Mr. Chen)

經銷商 Distributor



[www.yeoshehydraulic.com](http://www.yeoshehydraulic.com)

版權所有 翻印必究  
Copyright ©2025 by YEOSHE